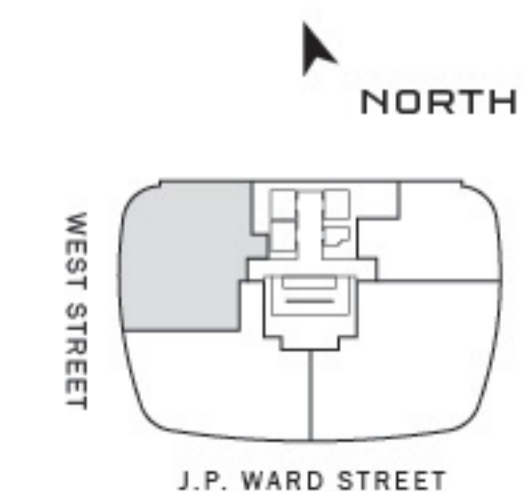
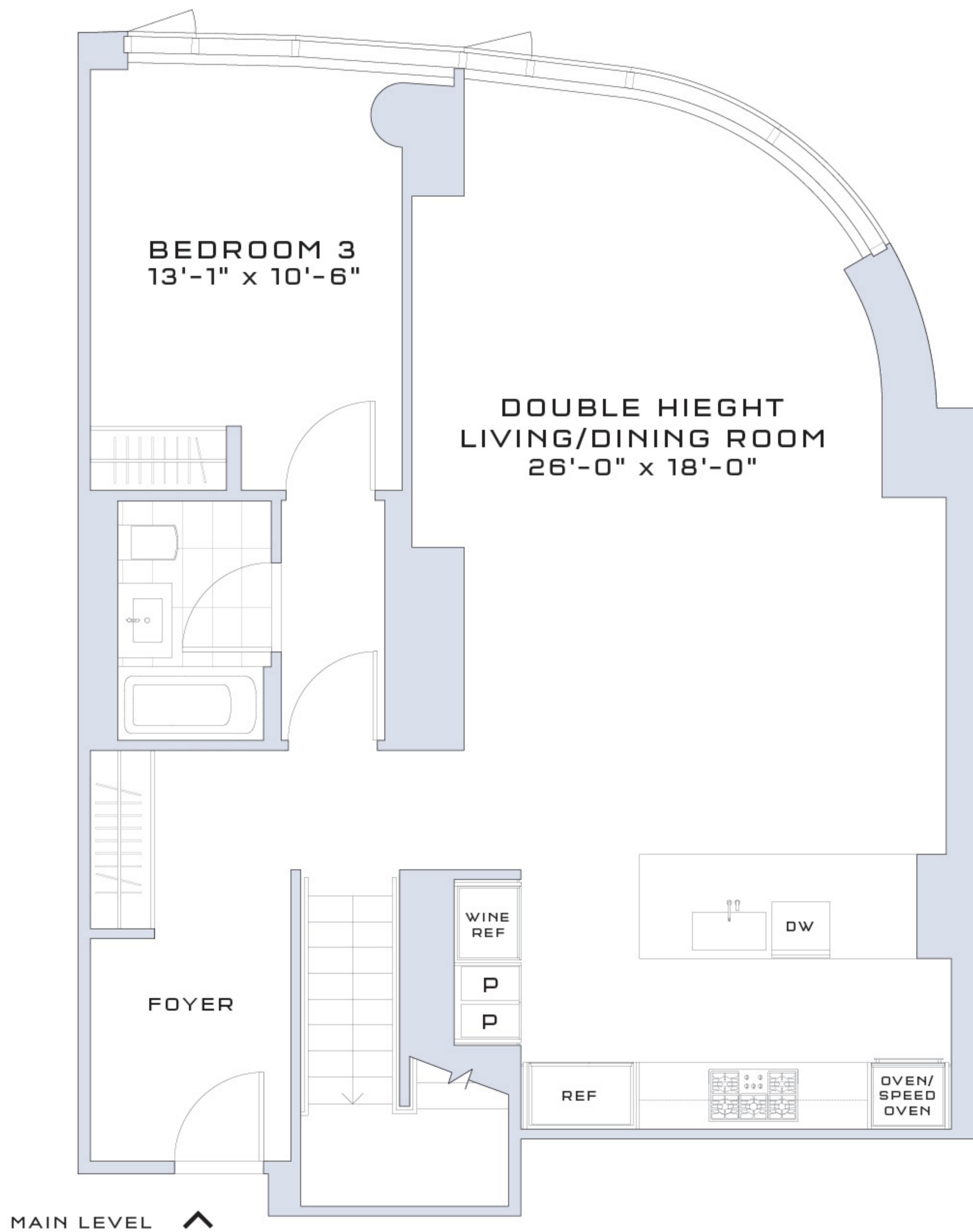


240

DUPLEX
3 BEDROOMS
3 BATHROOMS

INTERIOR
2403_{SF}
223.2m²



NOT TO SCALE

ALL DIMENSIONS, AREAS, AND SQUARE FEET/METERS ARE APPROXIMATE AND SUBJECT TO NORMAL CONSTRUCTION VARIANCES AND TOLERANCES. SQUARE FOOTAGE EXCEEDS THE USABLE FLOOR AREA AND INCLUDES COLUMNS, MECHANICAL PIPE SHAFT, SHAFTWAYS, CHASEWAYS AND CONDUITS AND OTHER COMMON ELEMENTS. SPONSOR RESERVES THE RIGHT TO MAKE CHANGES IN ACCORDANCE WITH THE TERMS OF THE OFFERING PLAN. PLANS AND DIMENSION MAY CONTAIN MINOR VARIATION FROM FLOOR TO FLOOR. ROOM DIMENSIONS ARE MEASURED ON THE APPROXIMATE CENTERLINE OF EACH ROOM. GIVEN THE CURVED NATURE OF THE BUILDING, WALL-TO-WALL MEASUREMENTS WITHIN A ROOM WILL DIFFER DEPENDING ON WHERE THE MEASUREMENT IS TAKEN. MORE DETAILED FLOOR PLANS ARE CONTAINED IN THE OFFERING PLAN AVAILABLE FROM SPONSOR. THE COMPLETE OFFERING TERMS ARE IN AN OFFERING PLAN AVAILABLE FROM SPONSOR.